



WICKERWOOD FARM

WEDDINGS & EVENTS

A *One of a Kind* BOUTIQUE PLANNING,
STYLING & VENUE HIRE COMPANY

BROCHURE 2021/22



WELCOME TO WICKERWOOD FARM

"Thank you for contacting us about our venue and may we take this opportunity to say a huge congratulations on your engagement!"

My name's Jude and I'm the owner and founder of Wickerwood Farm, the place we also like to call Wickerwood HQ!

Our 20-acre farm is set within the picturesque Sussex country side, a farm that has been within my family for 3 generations...

Exclusive weekend access is now available to those looking at getting away from it all and finding that all important venue for that all important wedding reception.





WE'D ALSO LIKE TO MENTION

Here at Wickerwood Farm, we pride ourselves as a style-led venue. We have worked within the styling and prop making industry for many years, so are proud to offer these services to those of you looking to go the extra mile or simply acquire something a little quirky.

"Whether you're looking to create your own DIY wedding, or you need someone else to take the reins and do the planning and styling for you, then we can help."

We also feel it important to mention we are an eco-friendly venue, and so are keen to offer the services of our reputable local suppliers with the same ethos. We have a wealth of professionals at our finger tips to help make your wedding the one everyone will remember.

WICKERWOOD FARM HIRE PRICES PACKAGES & OPTIONAL EXTRAS

Based on a 3 day hire 9AM Friday – 4PM Sunday

VENUE HIRE ONLY

Lake, woodland and weekend meadow hire	£3250.00
Weekend meadow hire only	£2500.00

Also included within the venue hire price :

Exclusive use of the meadow site over the agreed hire period.
Public Liability Insurance.
Separate field for parking.
Mains running water.

DIY OPTION

For those couples looking for a venue that offers a blank canvas, why not take advantage of our DIY option? Confirm the date, book the venue and the rest is up to you! * subject to our t's&c's.

A couple of tips when organising your own DIY wedding:

- Be sure to meet your suppliers. You'll need to show them around the venue prior to the event, they may need to view accessibility as well as the site itself.
- Make sure you inform the marquee/tipi company that power is required at Wickerwood Farm. They should supply you with the correct generator for your power requirements.

Note: Wickerwood Farm does not supply power.

If the DIY option just isn't for you, then how about our tipi package? We've added a package for guest numbers for up to 100 daytime guests and one for up to 150 daytime guests. Note both prices are based on the hire of the lake and meadow. There is also a selection of optional extras to choose from.

OUR PLANNING SERVICE

This includes pre-event planning assistance, from introductions to suppliers, obtaining quotes on your behalf and scheduling the build prior to your wedding or event.

We also offer management over the big weekend, overseeing the suppliers for the setup, managing the day and overseeing the takedown at the end of the event, leaving you to kick back and enjoy your wedding weekend!

Prices from :

Basic pre-event planning assistance - £400.00

Wedding weekend management - £600.00

Full planning of entire wedding or event - 10% of entire cost over £10k



WHAT DOES OUR VENUE OFFER?

Wickerwood Farm is an exclusive tipi wedding venue, a venue for the outdoor bride. An undiscovered, peaceful 3-acre stretch of relaxed farmland located just outside Horam in East Sussex.

We host a limited number of weddings and private events here each year throughout the summer months (June - September) for up to 150 daytime guests.

This well-maintained stretch of farmland offers ample space for all required by you boho brides and festival lovers, with added access to a stunning, privately owned lake surrounded by woodland giving a real bohemian vibe. A private area on the bank of this beautiful lake is available for intimate, unlicensed ceremonies only.

This is a truly magical place, a photographer's dream for those couples looking for a backdrop to die for!

By popular demand, we now have a designated area available for those wishing to partake in a spot of glamping. Bell tent hire is available upon request. Read on to find out more.

Please note: Viewings are by appointment only.



TIPI PACKAGE 1 - For up to 100 daytime guests

2 HAT TIPI

Ideal for the smaller wedding parties for up to 100 daytime guests. This package includes:

Full weekend venue hire, 2 hat tipi's (in white), matting, trestle tables, benches, dancefloor, up-lighters, fairy lights (illuminating the structural tipi poles), luxury shepherds hut toilets (2+1), 40KVA generator with professional rigging and fuel, outdoor ceremony seating for 60 guests (£3.75 per additional chair), 11mtr Persian rug aisle and a ceremony arch.

TOTAL: £10,546.95

- Generator hire is included, however this cost may increase depending on catering requirements.
- £150 + vat call out charge maybe incurred if damage is caused to the toilets over the hire period.

TIPI PACKAGE 2 - For up to 150 daytime guests

3 HAT TIPI

With daytime capacity for up to 150 guests, the 3-hat tipi offers space for daytime guests for the reception meal as well as offering a drinks reception area and not forgetting that all important additional protection from adverse weather should the heavens decide to open!

This package includes - Full weekend venue hire, 3 hat tipi's (in white), matting, trestle tables, benches, dancefloor, up-lighters, fairy lights (illuminating the structural tipi poles), luxury shepherds hut toilets (2+1), 40KVA generator with professional rigging and fuel, outdoor ceremony seating for 60 guests (£3.75 per additional chair), 11mtr Persian rug aisle and a ceremony arch.

TOTAL £12,507.75

- Generator hire is included, however this cost may increase depending on catering requirements.
- £150 + vat call out charge maybe incurred if damage is caused to the toilets over the hire period.

We understand some couples may like a more bespoke package so below is a list of optional extras for you to hand select.

TIPI OPTIONAL EXTRAS

- 10 mtr luxury Dandy Dura matting walkway - £ 54.00
- 10 mtr Festoon lit walkway - £145.20
- Copper torches - £18.00 each
- Apple crate stools with sheep skin lids (Sits 1-2) - £9.60
- Large mirror ball over dancefloor - £66.00
- Bar - £142.00
- Catering tent from - £240.00



WICKERWOOD FARM PROP HIRE ITEMS

*These items can be hired directly through Wickerwood Farm

LOUNGES:

How about adding a super cool vibe to your wedding reception by incorporating a styled lounge area, or two? Suitable for indoor or outdoor use, and with styles ranging from Boho Luxe to gentleman's lounge we've got it covered! (*Subject to availability)

BOHO LOW LOUNGE £350.00



GENTLEMANS LOUNGE - £300



BERGÈRE GENTLEMANS LOUNGE - £300

For those of you looking to take your wedding style to another level why not hire our Bergère Gentlemans Lounge? It comes equipped with an original 3-piece French Bergère sofa and 2 chairs in dark blue velvet, a brass side table, large rug and coffee table. You'll be sure to find your guests kicking back and soaking up the sunset here!



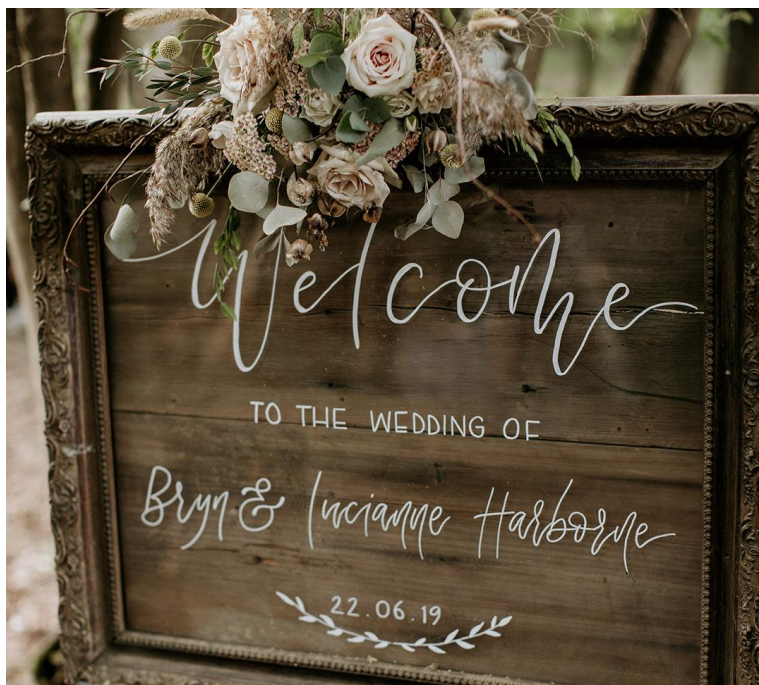
OUTDOOR BEER BARREL TABLES & CHAIRS - £25.00 each

We offer up to x10 beer barrel tables each seating 3 guests, perfect for creating a subtle industrial vibe and ideal for those guests wishing to soak up the sunset with a glass of champagne whilst enjoying a good old natter with old friends.



WELCOME SIGN - £160.00

Every wedding needs a welcome sign right? This sign was lovingly created by myself and comes with an old English artists easel. The message can be personalised to the couple's names and wedding date by our very own professional calligrapher, the cost for this is included in the hire price. This sign looks stunning either in the woodland for the ceremony or by the entrance into the tipi.



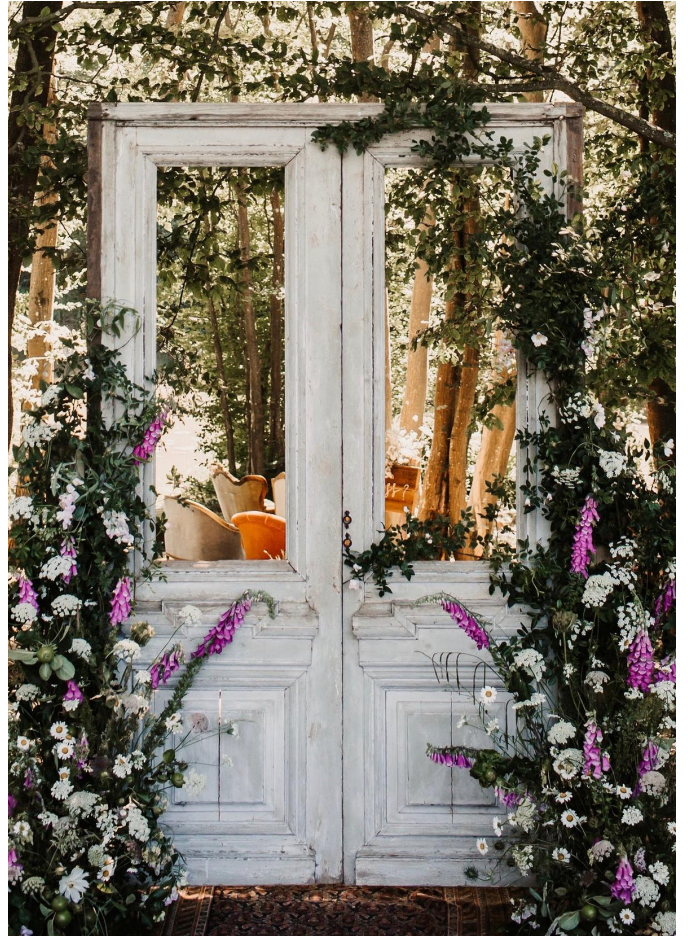
CAN I GET A WITNESS - £45.00

Bringing a little humour and style to your ceremony with this bespoke 'Can I get a witness' sign.



FRENCH DOORS - £300.00 with lace, £250.00 without lace

These stunning original French entrance doors were purchased from an antique market in France and upon arriving here at Wickerwood Farm, have been sympathetically modified in order to operate safely as entrance doors into the woodland here. They offer a stylish screen between the bride and her guests upon arrival at the woodland for the ceremony service. Vintage French lace is available to hire for the windows adding a beautiful, delicate look to the doors. They offer a unique style and once dressed with florals they really are a showstopper and an item every guest can get to enjoy walking through.



SOFA CEREMONY

£1200.00 (Includes seating for 30 guests with rug aisle. Florals not included).

For those of you wanted to push the boat out, this setup is a sure way to wow your guests! This eclectic arrangement of authentic velvet seating comes in a number of sofas, loveseats and lavish armchairs, all offering your guests comfort in style. Perfect for the intimate wedding ceremony seating 30. For those with larger wedding parties guests are also welcome to stand on the banked area behind.

This set up is unique to Wickerwood Farm.



CEREMONY ARCHES

We currently have 3 different styles of ceremony arch available for hire here, all bespoke and made with love by my-self.

TRIANGLE ARCH - £150

Our large triangle arch is a real statement piece and is ideal for ceremonies out in the open meadow. As you can see by adding pampas it gives it a real Californian vibe!



SILVER BIRCH ARCH

£150.00 with Macramé £120.00 without.

Our bespoke silver birch arch was made specifically for the woodland. A beautiful Macramé made especially for this arch looks beautiful blowing in a gentle breeze. The Macramé is an optional extra.

TWIG ARCH

£120.00

A stunning, organic arch that is made of two individual pieces that don't join. This arch looks stunning when wild florals are added giving it the impression of climbing wild flowers. Ideal for a woodland ceremony.



ORGANIC WOODEN LOVE LETTERS

£200.00

These love letters are made from locally felled silver birch trees and look great displayed in the woodland for ceremonies. They stand approximately 5ft high and look stunning dressed in wild florals, always a popular item to dress by florists!



HIRE OUR BESPOKE WOODEN CABIN

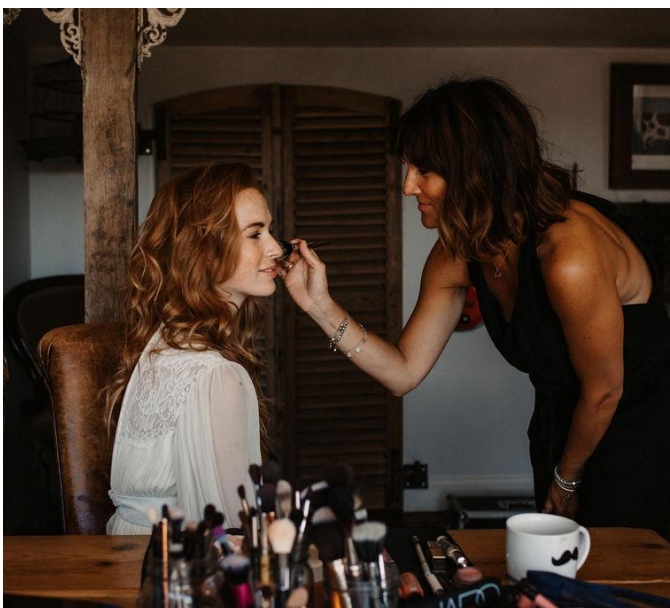
For those brides-to-be planning on adding the finishing touches to the venue the morning of the wedding, something else you might like to consider is the hire of our fully equipped bespoke wooden cabin.

A stress-free luxury option of somewhere onsite for hair, make-up, the all-important dress change and of-course a glass of bubbles, courtesy of Wickerwood Farm.

Exclusive morning cabin hire up until the time of the ceremony £ 300.00

AS SEEN IN: **HouseBeautiful**

**Homebuilding
& Renovating**



ACCOMMODATION OPTIONS

- GLAMPING

Wickerwood Farm offers ample space for those guests wishing to sleep beneath the stars in the stylish comfort of a luxurious bell tent.. I mean what's not to love about a short stumble to bed after a long day celebrating with friends and loved ones!

Our trusted Bell tent suppliers offer a personal, friendly service with various price options depending on guest budget, there's even a special bridal bell available! Catering options can be arranged for the following day, although this will need to be pre booked in advance, we can even offer a 'Breakfast in Bed' option for those who just feel like taking it easy!

Optional shower hire is also available upon request.

So why not take advantage of our weekend hire and share the following day with your closest friends and family?

Prices start from : £160.00

** Details of our bell tent supplier are available upon request.*



• LUXURY ACCOMMODATION

For those close friends and family who don't wish to camp, we have partnered up with our friends at Fair Oak Farm in Mayfield. Nestled in 12 acres of Sussex country estate and offering luxurious accommodation from a stunning c1600 Grade II Listed Sussex farmhouse, a range of converted Grade II Listed farm buildings and barns, eco-lodge tree houses and shepherds huts for up to 36 guests. Trusted suppliers are also available at Fair Oak Farm to suit individual requirements such as hair and make-up and other beauty treatments. Guests can also dine together in the splendour of the lounge barn the day after the wedding.

Preferential rates for transport between Wickerwood Farm and Fair Oak Farm with our preferred, trusted supplier is available upon request.

For further details on Fair Oak Farm visit www.fairoakfarm.co.uk



TO PLACE A BOOKING

Firm bookings require a signed booking form and a non-refundable 50% deposit of the venue hire fee only.

The balance payment and a refundable £1000 damages deposit are due 12 weeks prior to your event.

We all know it can be a laborious task reading through all the nitty gritty sometimes, but should you wish to proceed with placing a booking please take the time to carefully read through our detailed Terms & Conditions which are sent out with the booking form.



BASIC TERMS & CONDITIONS

If you have hired the venue for a wedding the hire period will normally be 3 days ie, 9am Friday – 4pm Sunday. The venue must be vacated and personal belongings taken by 4pm on the Sunday leaving only items belonging to suppliers ie, marquee, toilets, hired bell tents etc. These items will be collected from 4pm onwards, weather permitting. If you have hired the venue for a small event, set up will need to take place the day of the event and take down the following day.

The lake and surrounding woodland is privately owned and needs to be booked in advance to avoid disappointment. Our woodland is only available for the unlicensed ceremony. Once the ceremony has taken place, guests will be asked to make their way to the reception area.

Camping at Wickerwood Farm the night before the event is not permitted unless otherwise agreed. Campers are welcome to stay at the venue on the Sunday during the day however, the premises MUST be vacated by 4pm the day after the event.

We take pride in our venue and like to offer it in good condition for the next wedding guests so unfortunately fires on the grass are not permitted. All fires must be contained within the firepit. Logs for the firepit can be supplied upon request at an additional cost.

Ample parking is available on the farm however, vehicles are left at the owner's risk. Wickerwood Farm will not be held responsible for any damage to vehicles or personal belongings lost or stolen on the premises.

Due to our venue being an Eco-friendly venue, please use our own natural confetti supplier – www.stropshirepetals.com Samples of these products can be seen upon viewing the venue if required.

Wickerwood Farm has its own public liability insurance. However, we advise our clients to take out their own wedding insurance to cover non-refundable costs should they need to cancel their wedding date. More details of this can be found in our main T's & C's.

We allow well behaved dogs, however they must be supervised at all times as Wickerwood Farm is a working farm with livestock.

Non amplified music is welcome throughout the day. Due to the proximity of local residents, all music must stop at 11pm. Noise levels must be kept to a minimum after this time.

On the night of the event, we kindly ask guests who aren't camping to vacate the venue by 11.30pm. The gate to the road will be locked at mid night, so its important guests planning on driving leave before this time to ensure they aren't locked in! The only guests left after 11.30pm are campers.

We would kindly ask that staff are employed during your event to keep the venue tidy and hygienic. It must be confirmed with your caterers prior to your event that all rubbish and food waste be removed from the premises, upon leaving the venue. Any remaining rubbish from the following day must be removed by the client and their guests, this must be done by 4PM. Wickerwood Farm are permitted to hold back a percentage of the damages deposit if any rubbish is left on site.





WICKERWOOD FARM

WEDDINGS & EVENTS



CONTACT

Should you wish to discuss any of the information in this brochure in more detail,
please call Jude on 07901 734 258 or email jude@wickerwoodfarm.com

Alternatively, all other details can be found on our website www.wickerwoodfarm.com

Venue postcode: TN21 9HN